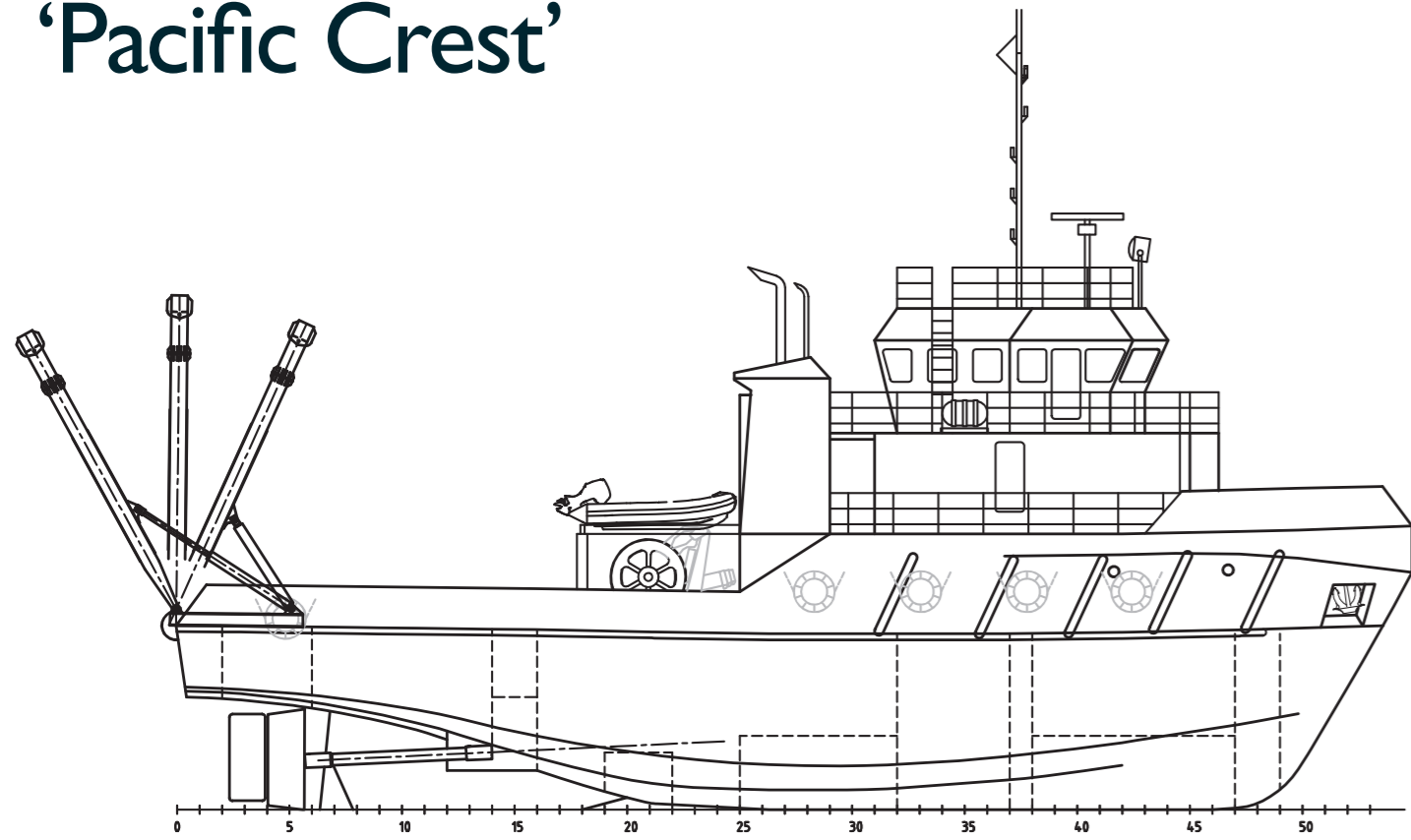
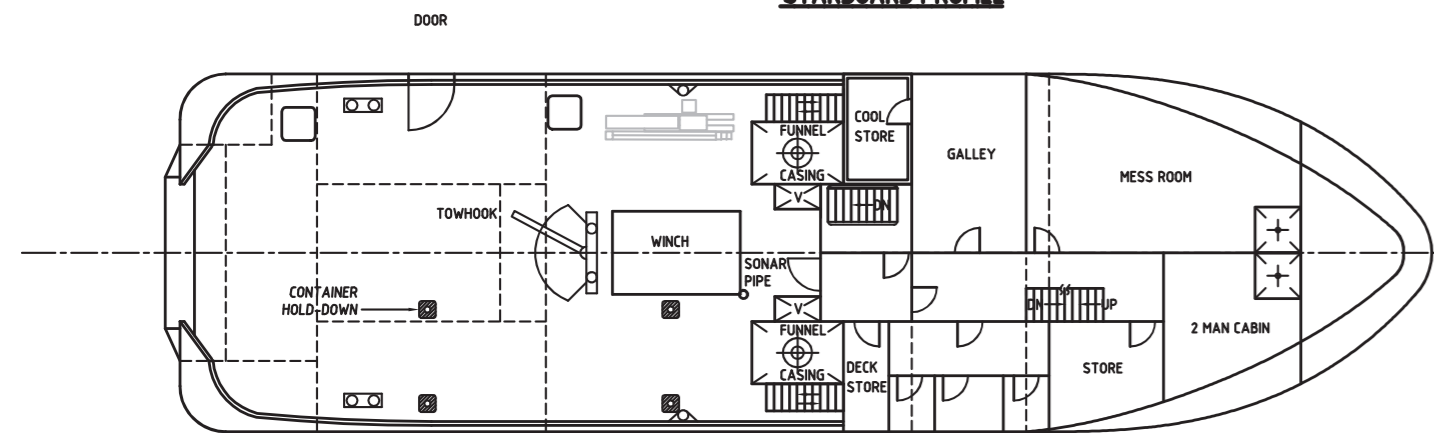


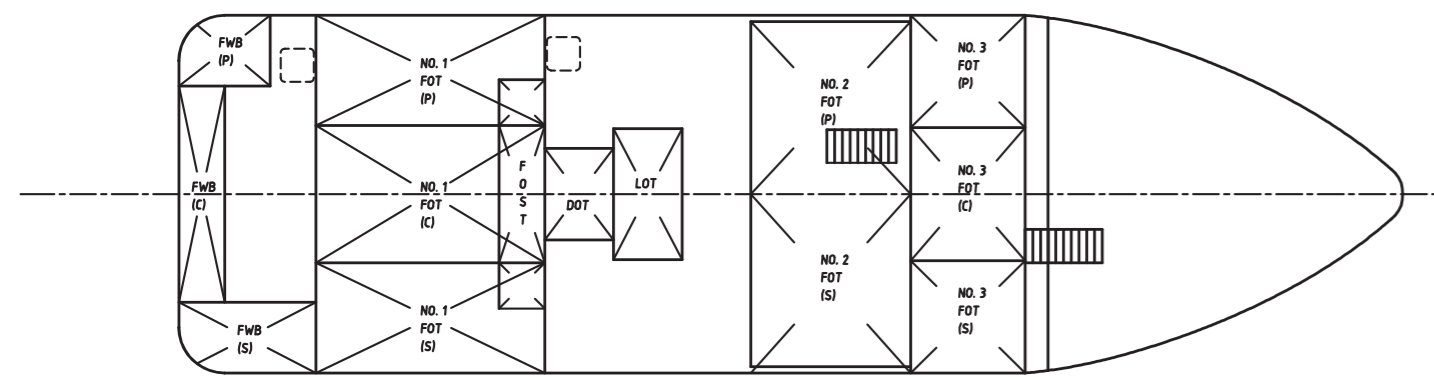
'Pacific Crest'



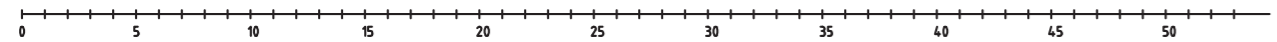
STARBOARD PROFILE



MAIN DECK PLAN



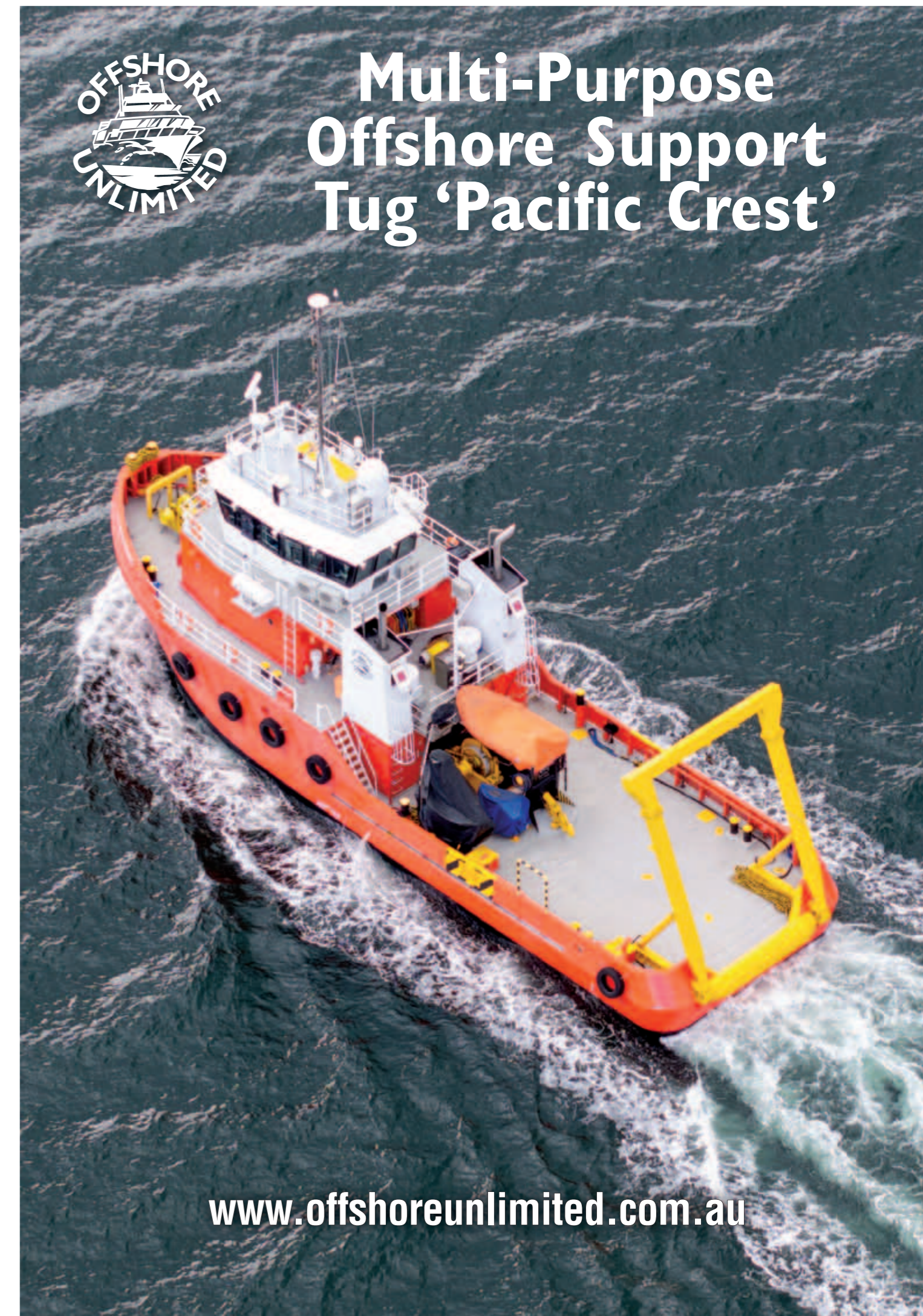
BELOW MAIN DECK PLAN



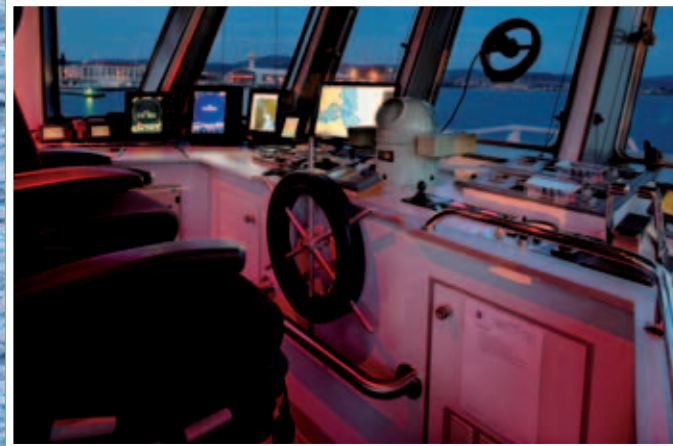
OFFSHORE UNLIMITED PTY LTD
 info@offshoreunlimited.com.au
 Tel 03 6235 7157 Fax 03 6235 7199
 www.offshoreunlimited.com.au



Multi-Purpose Offshore Support Tug 'Pacific Crest'



www.offshoreunlimited.com.au



PACIFIC CREST

PRINCIPAL PARTICULARS

Vessel Type	Twin Screw Tug
Year Built	2007
Flag	Australian
Class	ClassNK 2A Cargo
GRT	297
Length	30.2m
Draft	3.3m
Bollard Pull	28 tonnes
Speed	12 knots Free Running
Fuel Capacity	240m ³
Fuel Cons. Free Run	4.1m ³ / day
Fuel Cons. Towing	1.2 - 3.3m ³ / day
Accommodation	14 persons in 8 cabins
Air-conditioning	All areas

PROPULSION MACHINERY

Main Engines	2 x Mitsubishi S6R2 - MPTK3L 1040PS @ 1450 rpm
Power	2 x 759 Kw @ 1450 rpm
Gearbox	Reinjes WAF 562L (4.5:1)
Propeller	2 x 4 Blade Manganese Bronze with Kort Nozzles
Steering Gear	Twin Rudder Electro - Hydraulic

AUXILIARY EQUIPMENT

Generators	2 x Cummins 98KVA
Sewerage Plant	Marpol Approved
F.O Transfer Pump	20m ³ / hour
Watermaker	280 litres / hour

BRIDGE EQUIPMENT

Navigations Systems Include	ARPA - AIS ECDIS - 9GHz & 3GHz Radars Auto Pilot GPS x 3 Full GMDSS NAVTEX Sat Compass Sat Phone Mobile & Satellite Internet
-----------------------------	--

DECK EQUIPMENT

Tow Winch	30t
Deck Crane	3 tonnes @ 4m 1 tonne @ 12m
Stern Roller	
Rescue Equipment	SOLAS MOB Boat / Dacon Scoop / Jacobs Cradle
A Frame	WLL 15 tonnes

