



# Multi-Purpose Offshore Support Tug 'Ocean Dynasty'



[www.offshoreunlimited.com.au](http://www.offshoreunlimited.com.au)





# OCEAN DYNASTY

## PRINCIPAL PARTICULARS

Vessel Type	Twin Screw Tug
Year Built	2008
Flag	Australian
Class	NKK 2A
GRT	321
Length	31.2m
Draft	4.3m
Bollard Pull	30 tonne
Speed	12 knots Free Running
Fuel Capacity	290m <sup>3</sup>
Fuel Cons. Free Run	4.1m <sup>3</sup> / day
Fuel Cons. Towing	1.2 - 3.3m <sup>3</sup> / day
Accommodation	15 persons in 8 cabins
Air-conditioning	All areas

## PROPULSION MACHINERY

Main Engines	2 x Mitsubishi S6R2 - MPTK3L 1040PS @ 1450 rpm
Power	2 x 759 Kw @ 1450 rpm
Gearbox	Reinjes WAF 562L (4.5:1)
Propeller	2 x 4 Blade Manganese Bronze with Kort Nozzles
Steering Gear	Twin Rudder Electro - Hydraulic

## AUXILLIARY EQUIPMENT

Generators	2 x Volvo 98KVA
Sewerage Plant	Marpol Approved
F.O Transfer Pump	20m <sup>3</sup> / hour
Watermaker	280 litres / hour

## BRIDGE EQUIPMENT

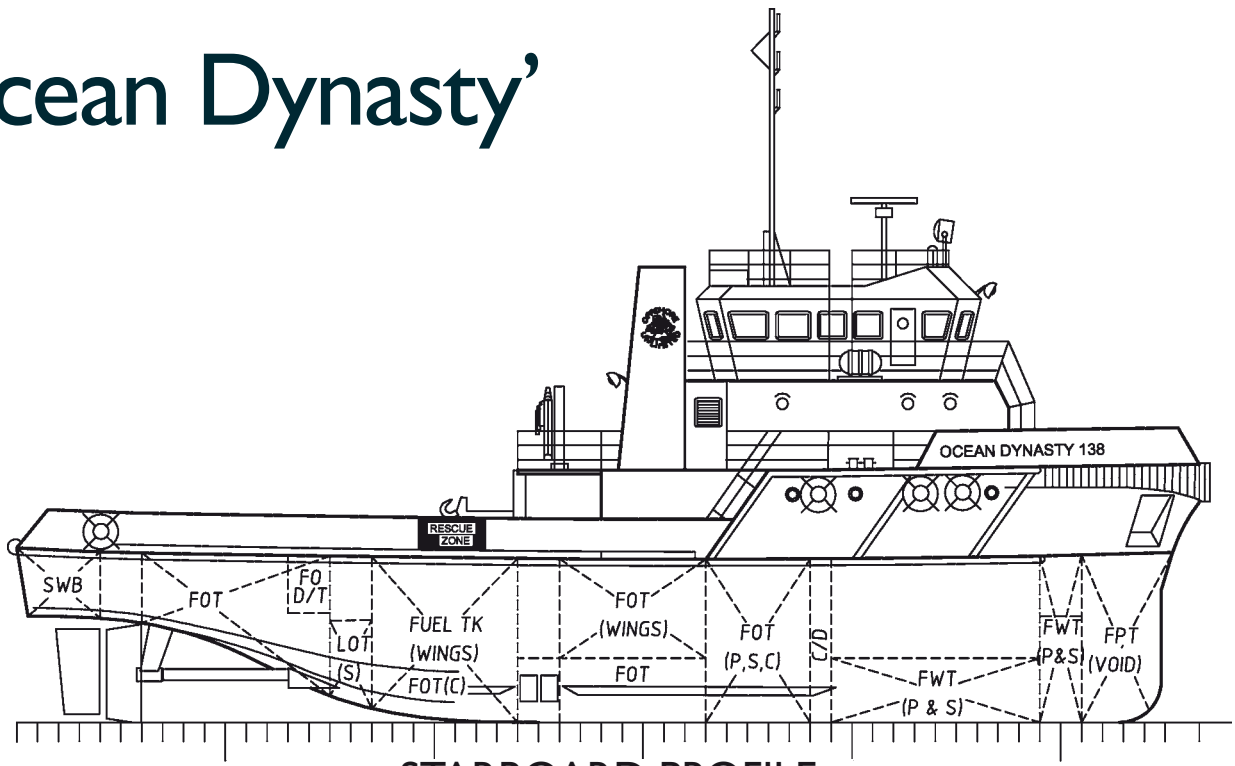
Navigations Systems Include	ARPA - AIS ECDIS - 9GHz & 3GHz Radars Auto Pilot GPS x 3 Full GMDSS NAVTEX Sat Compass Sat Phone Mobile & Satellite Internet
-----------------------------	--

## DECK EQUIPMENT

Tow Hook	40 tonne
Deck Crane	3 tonne @ 4m 1 tonne @ 12m
Stern Roller	
Rescue Equipment	SOLAS MOB Boat / Dacon Scoop / Jacobs Cradle

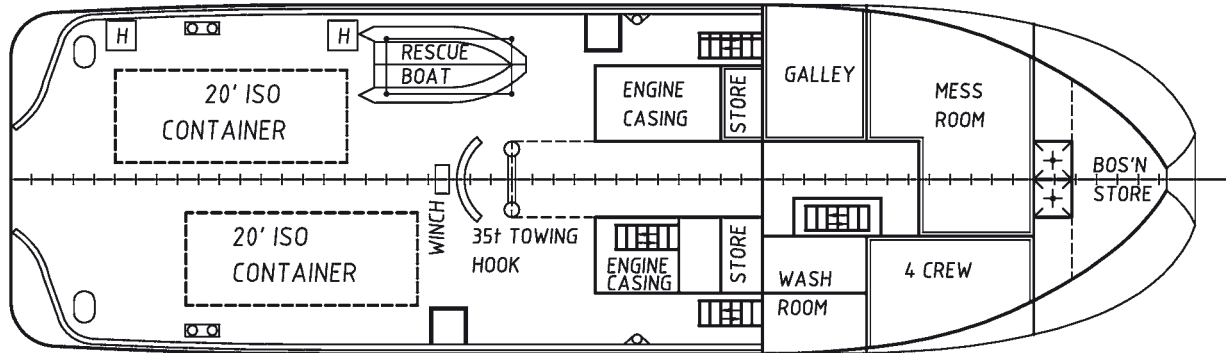


# 'Ocean Dynasty'

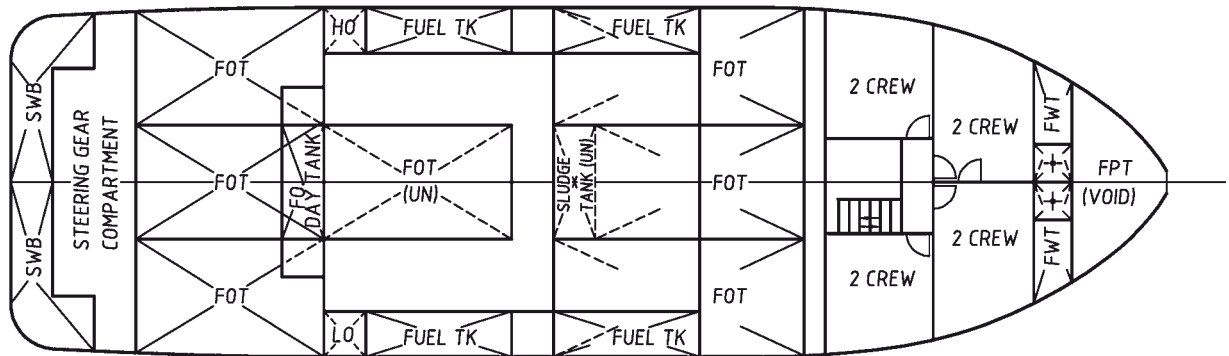


FRAME SPACING 550mm

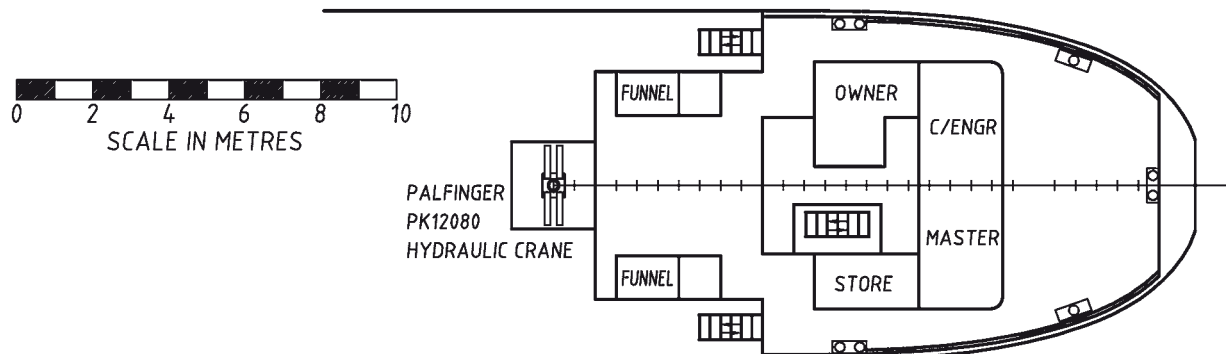
STARBOARD PROFILE



MAIN DECK PLAN



BELOW MAIN DECK PLAN



FORECASTLE DECK PLAN



**OFFSHORE UNLIMITED PTY LTD**

[info@offshoreunlimited.com.au](mailto:info@offshoreunlimited.com.au)

Tel 03 6235 7157 Fax 03 6235 7199

[www.offshoreunlimited.com.au](http://www.offshoreunlimited.com.au)

